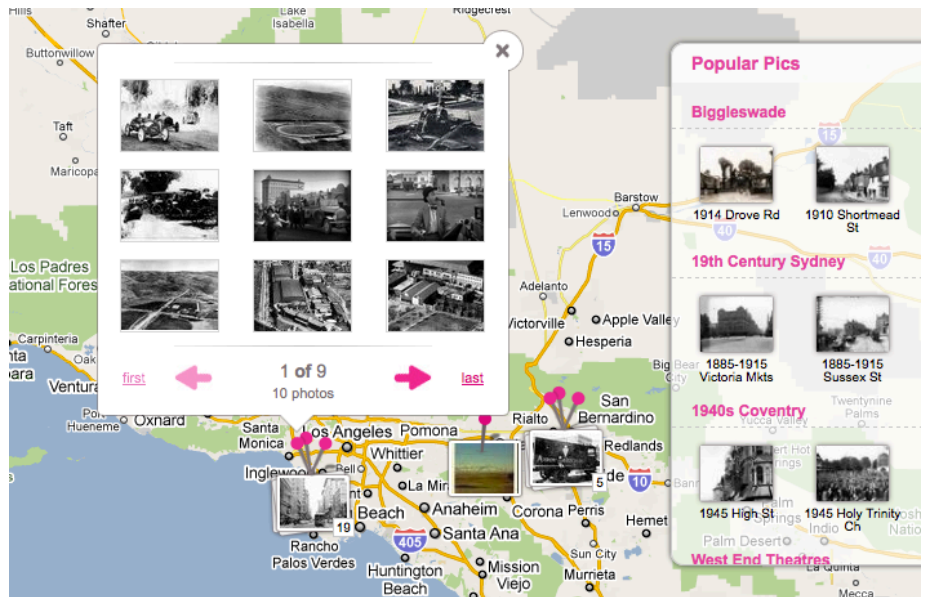


### PLN Report #3 -- Historypin.com Scott Simpson

The website historypin.com allows users to pin photographs to locations using the Google Maps engine. While most of the content on the site right now seems to be 1910-1950s era England, the idea is a pretty cool one for education.

If the idea of attaching pictures and media catches on with teachers as they begin to use rich media in the classroom, they would be part of a community that actively generates content for not just their classrooms, but for learners throughout the world. Being able to visualize changes to an area or landmark using actual photos rather than drawings or even descriptions would enhance the learners' ability to connect with the area or landmark.



This use of Google Maps suggests that an even more advanced implementation would be possible – museums could link scanned copies of historical documents to the places they were signed, recreations of famous speeches could be tagged along with pictures of the speaker, and academic information such as interpretive or historical papers and studies could be linked to the locations to which they refer.

Rather than the clunky and pseudo-immersive 'cyberspace' of the 80's and 90's, geo-tagging a map with rich media seems like a more authentic way of presenting historical information to learners. Instead of creating a 'place' where learners 'go', the metaphor can be reversed to using a location-aware map that shows what is and was around wherever the learner is.